

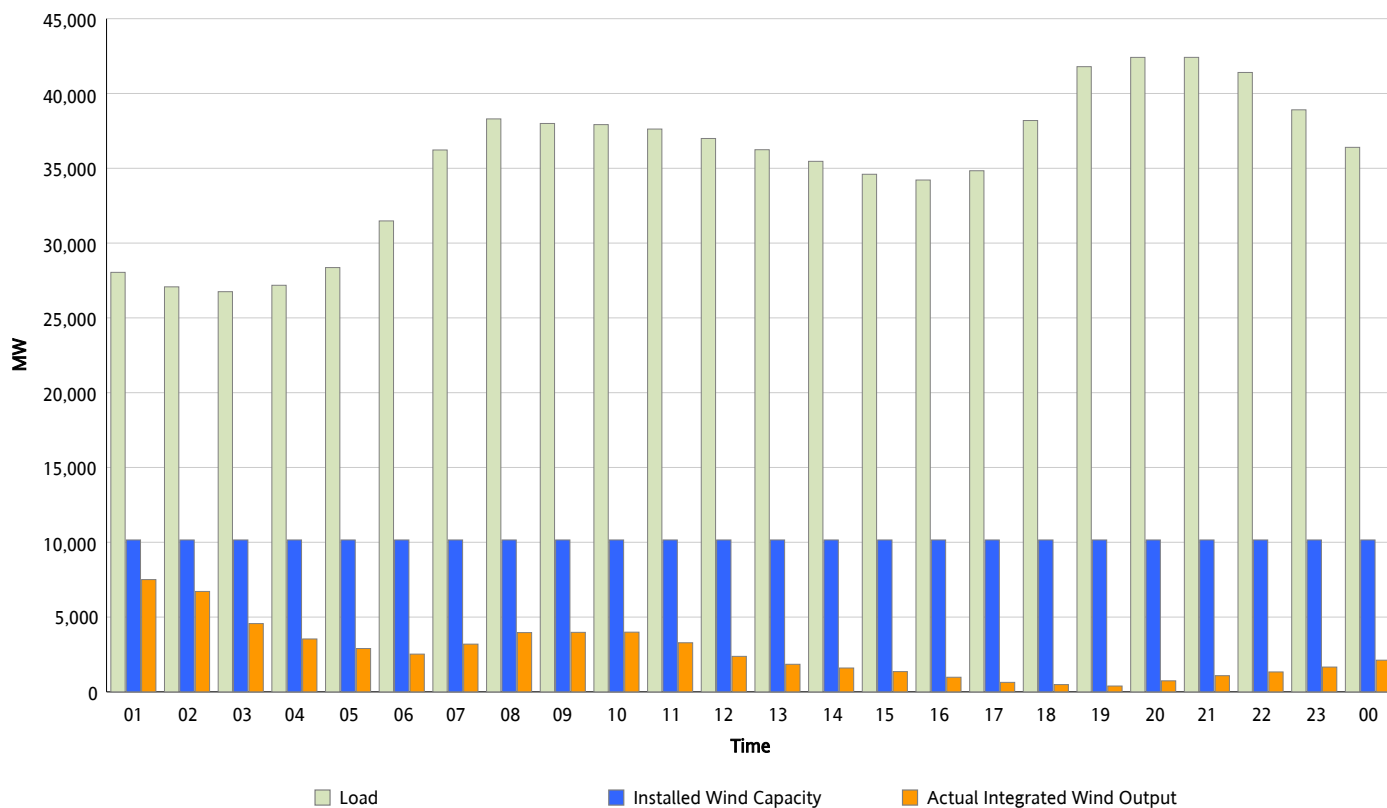


ERCOT Grid Operations

Wind Integration Report : 12/10/2012

Peak Load	42,416 MW
Load Peak Hour (HE)	21
Wind Over Peak	1,082 MW
Wind Record 11/10/12	8,521 MW
Max Wind Value*	7,687 MW
Wind Peak Time	00:39
Wind Integration %	27.63 %

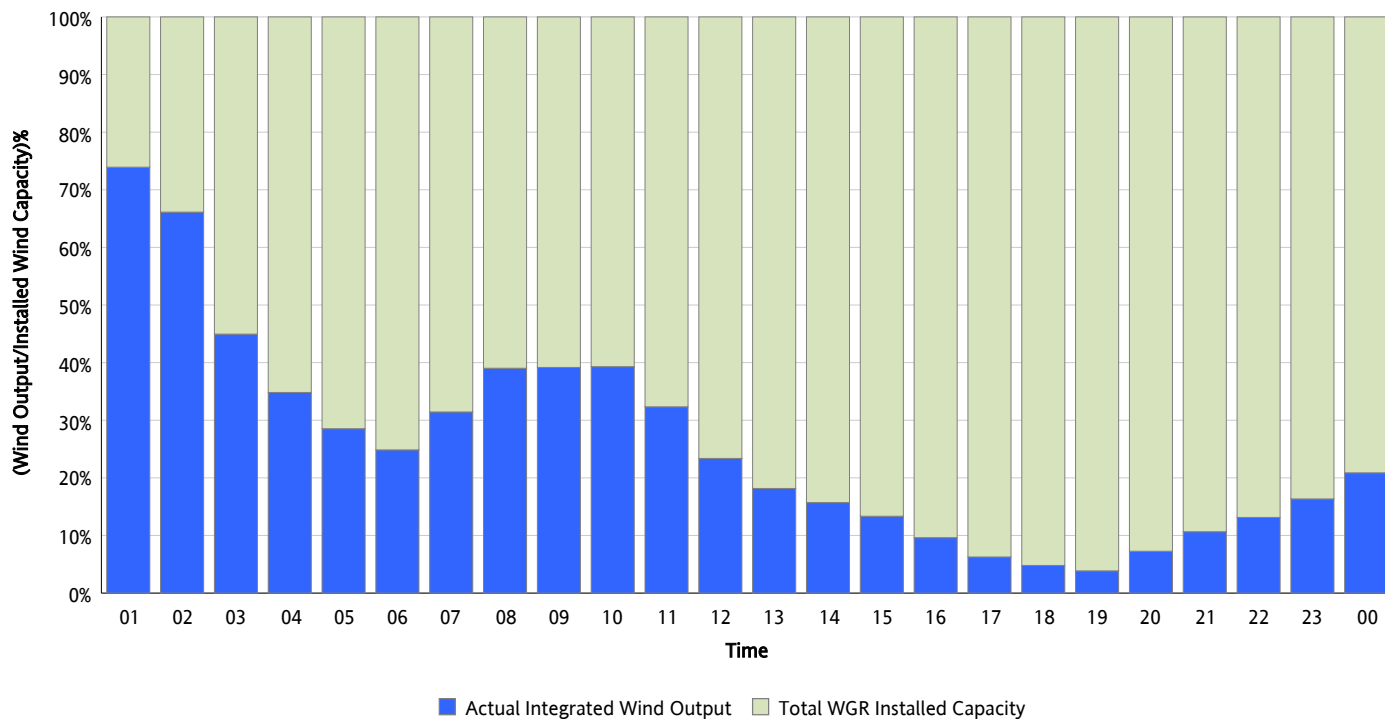
Hourly Average Actual Load vs. Actual Wind Output
12/10/2012



* Wind Record and Wind Max represent instantaneous values and the rest of the values are integrated over the hour

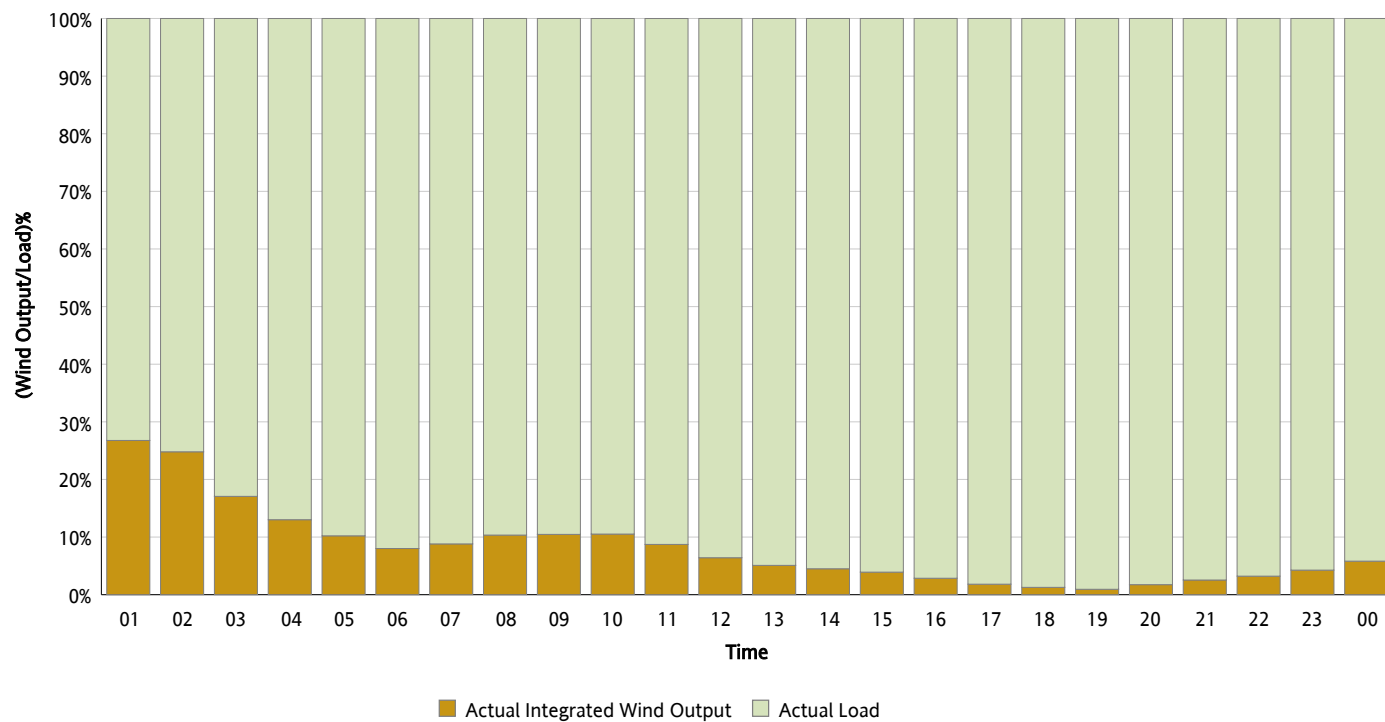
Actual Wind Output as a Percentage of the Total Installed Wind Capacity

12/10/2012



Actual Wind Output as a Percentage of the ERCOT Load

12/10/2012



ERCOT Load vs. Actual Wind Output

12/03/2012 - 12/10/2012

